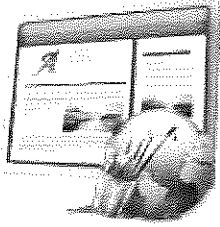


# Additional Resources for Workforce Board Members



## Web Sites

[www.doleta.gov](http://www.doleta.gov) - This is the United States Department of Labor's Employment and Training Administration site. It supports state and local workforce development systems in their efforts to provide high-quality job training and employment services.

[www.doleta.gov/usworkforce/wia/act](http://www.doleta.gov/usworkforce/wia/act) - The Workforce Investment Act of 1998 (Public Law 105-220) and WIA Regulations (20 CFR - Parts 660 through 667).

<http://www.doleta.gov/tradeact/statutes.cfm#Regulations> and

<http://www.doleta.gov/tradeact/directives.cfm> - Trade Act of 2002, 2009 and 2012.

[http://www.illinoisbiz.biz/dceo/Bureaus/Workforce\\_Development/](http://www.illinoisbiz.biz/dceo/Bureaus/Workforce_Development/) - The Department of Commerce and Economic Opportunity's (DCEO) Workforce Development site.

<http://www.illinoisworknet.com> - The Illinois workNet portal connects citizens, businesses, and workforce professionals to local and statewide resources by providing real-time access to employment and training services. The portal has become an integral component for implementing statewide programs, IWIB recommendations, and developing WIA staff and customer skills.

<https://illinoisjoblink.illinois.gov/ada/> - Illinois JobLink is an Internet-based job search tool that features current job openings. Illinois JobLink searches for open jobs by Job category. Both statewide and nationwide job banks are included.

[www.illinoisworknet.com/vos\\_portal/WIA\\_Works/en/Home/policyMakers/Policies](http://www.illinoisworknet.com/vos_portal/WIA_Works/en/Home/policyMakers/Policies) - This site warehouses the Illinois state policies surrounding WIA and TAA promulgated by DCEO.

[www.ILWorkInfo.com](http://www.ILWorkInfo.com) - The site includes employment statistics, job forecast, wages and demographic characteristics. IDES collects, analyzes and disseminates this data in cooperation with the U.S. Department of Labor's Bureau of Labor Statistics (BLS) and Employment and Training Administration (ETA).